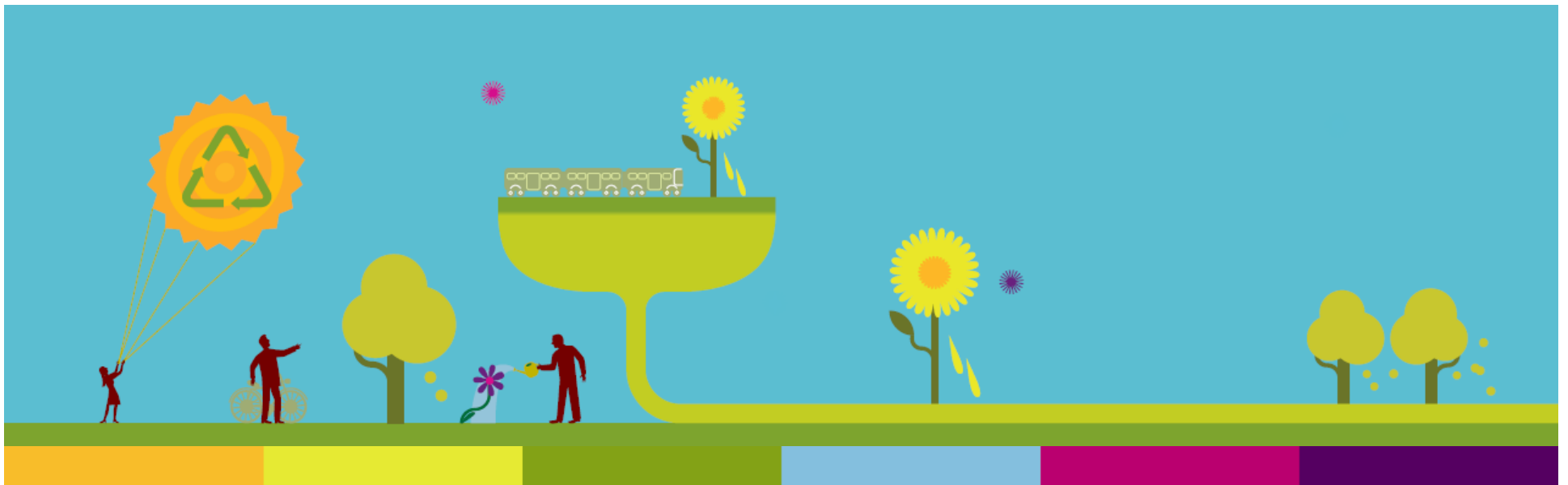


WLC+CO₂ tool

Anna Warrington | a.warrington@forumforthefuture.org



session outline

- who are we?
- purpose of the tool
- how it was developed
- what it does (and doesn't do)
- when to use it
- take a look
- questions



who are Forum for the Future?

We are a charity committed to sustainable development.

Our vision is of business and communities thriving in a future that's environmentally sustainable and socially just.

Our mission is to find practical ways that private and public organisations can deliver a sustainable future.



we believe that...

- Learning to live sustainably is vital for our long-term survival;
- Change will come by showing people how their lives will be better; and
- We need bold action now to make it happen!



and Fife Council?

- Third largest authority in Scotland
- Budget of over £580m a year (for now...)
- Varied area including St Andrews and Glenrothes
- Three pillars of partnership strategy:
 - Inclusion - ensuring that everyone has access to and can enjoy the benefits of our society
 - Sustainability - thinking ahead and taking account of the social, economic and environmental impact of our actions
 - Best Value - demonstrating continuous improvement of our services.

Working in partnership for three years



**Build a whole life
costing tool?**

**Why would we
do that to
ourselves?**



why?

- Know whole life costing is good practice
- Carbon focus at Fife
- Huge impact of procurement on carbon footprint
- But why not just buy the most resource efficient option?
- And why not use the other tools out there?



Developed ...

**... in
partnership**





what does it do?



**calculates the total cost
of a product from its
purchase through to,
and including, its end of
life**



what?

- ‘Traditional’ costs
- Carbon Dioxide costs
 - i. in traditional financial terms (£)
 - ii. in emissions of Carbon Dioxide (tonnes of CO₂ and in £);
 - iii. in a measure that combines the traditional financial cost and the financial cost of CO₂ (£).



Commissioning and purchase

- purchase price
- delivery costs
- design costs
- installation and commissioning
- user training

Operation

- energy use (electricity, gas, oil)
- vehicle fuel
- public transport
- water consumption
- maintenance and upkeep

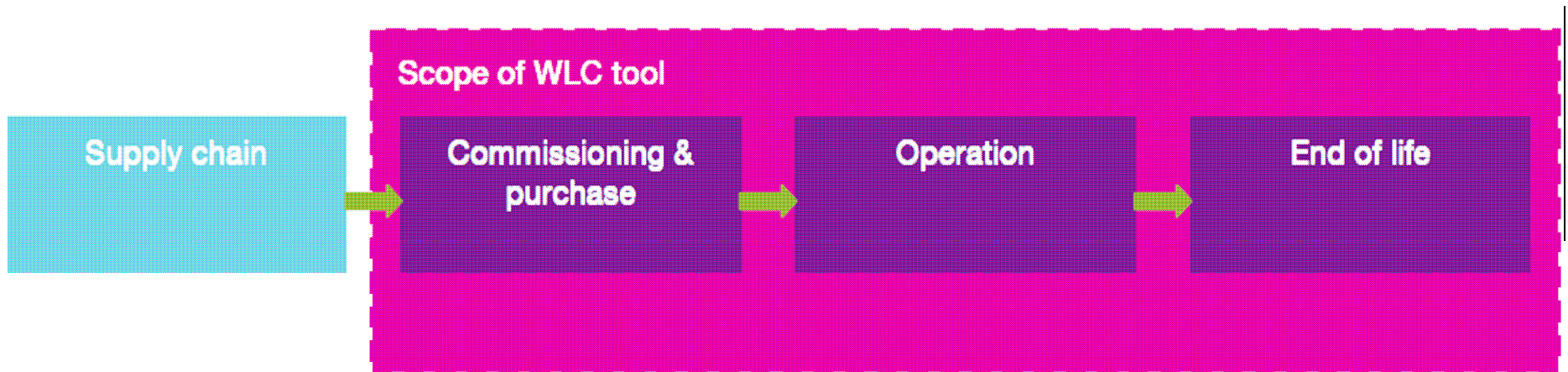
End of life

- disposal of packaging
- disposal of product
- residual value (where appropriate)

Health, safety & environment costs

- water effluent treatment
- annual PPE equipment cost
- annual health & safety training & documentation cost



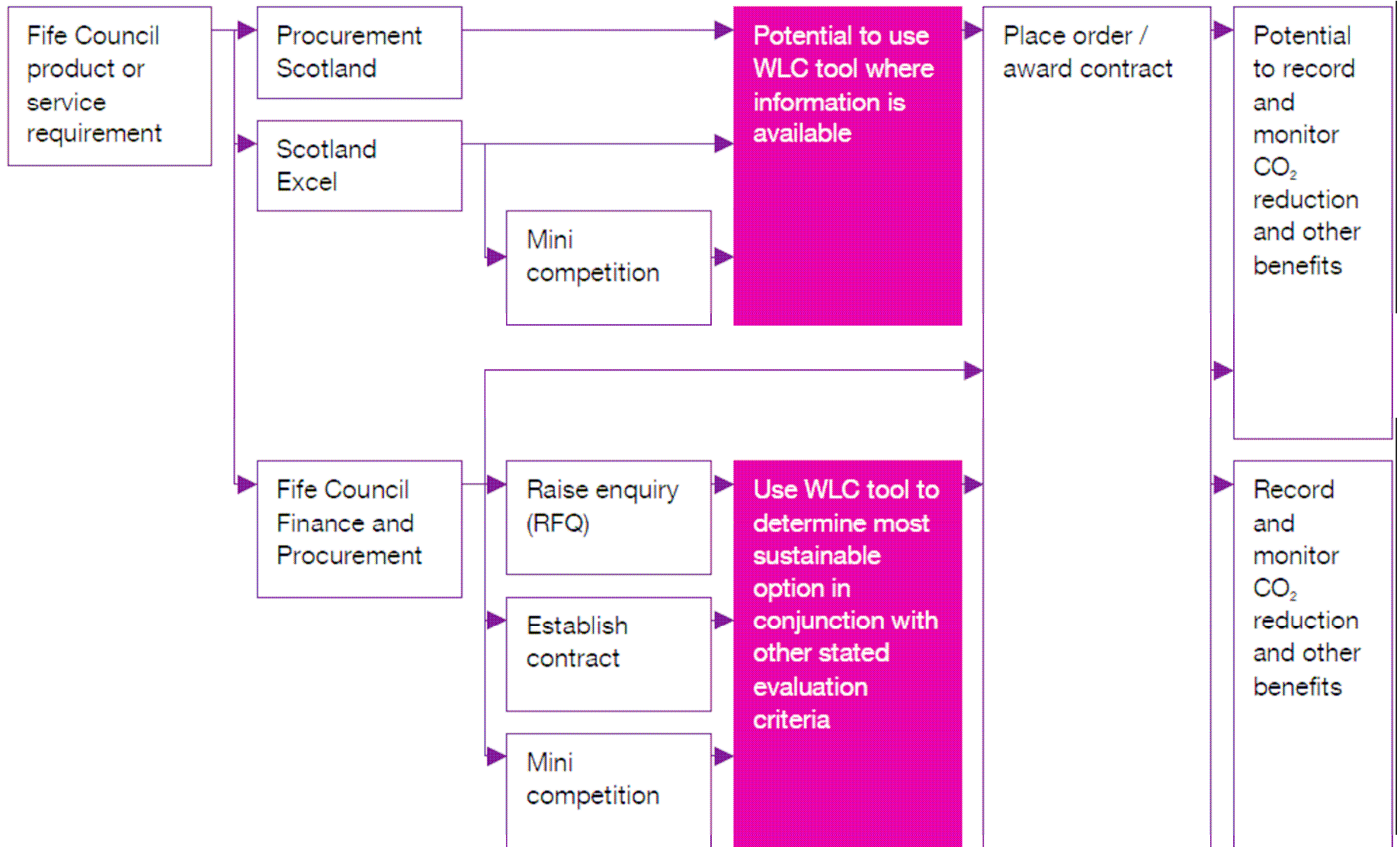


when to use it

For any procurement but most useful for procuring goods that consume:

- electricity
- gas
- oil
- vehicle fuel
- water








Microsoft Excel - Sustainable Procurement Tool (WLC+CO2) vFINAL protected.xls

File Edit View Insert Format Tools Data Window Help

S45

Whole life costing + CO₂ tool

please see accompanying guidance for how best to use this tool



version control: sustainable procurement tool (WLC+CO2) v11.

take a look...

Cover Results Model Data

so imagine

You've gone out to the market for a shredder, sharing your approach with potential suppliers and asking for all the necessary information (as set out in the user guide) ...

... and have two options to choose between:

- The Mighty Shredder
- The Incredible Shredder



1) Top line results:

Cheapest option from:

	Tender:
a) A purely financial perspective (excluding residual values)	Incredible shredder
b) A purely environmental perspective	Incredible shredder
c) A combined perspective using an external cost of carbon of 12 £ / tonne	Incredible shredder
d) A combined perspective using an internal cost of carbon of 150 £ / tonne	Incredible shredder

2) Financial results

Financial Savings / Costs of each tender over the others

	Financial costs (£)	Rank	Mighty shredder	Incredible shredder
Mighty shredder	16,140	2	N/A	4,564
Incredible shredder	11,576	1	4,564	N/A

3) CO2 results

CO₂ Savings / Costs of each tender over the others

	Tonnes of CO ₂	Rank	Mighty shredder	Incredible shredder
Mighty shredder	11	2	N/A	1
Incredible shredder	9	1	1	N/A



further questions?



<http://www.forumforthefuture.org/project/WLC+CO2>

<http://www.forumforthefuture.org/files/WLC-CO2-tool-user-guide-WEB.pdf>



WLC+CO₂ tool

Anna Warrington | a.warrington@forumforthefuture.org

